

Introducing DIAMOND COAT™



Introducing **Diamond Coat™**— a remarkable, scratch-resistant polyaspartic coating that transcends expectations. This exceptional coating is available with unrivalled work time catering to your specific needs. Choose from a range of finishes, including gloss, semi-gloss, and matte, to achieve the perfect aesthetic appeal.

Experience the epitome of convenience. **Diamond Coat™** is designed for effortless application, allowing for a seamless process. Its rapid curing properties ensure a fast return to service, minimizing downtime and maximizing productivity.

Rest easy knowing that **Diamond Coat™** is equipped with advanced additives that shield the substrate from harmful ultraviolet (UV) light. The cured surface forms a hard, yet flexible barrier, offering exceptional durability and longevity, even under heavy traffic conditions.

Elevate your surfaces with the unparalleled protection and aesthetics of **Diamond Coat™**— where clarity, scratch-resistance, and performance converge. Say goodbye to compromises and embrace a coating that truly stands the test of time.



Diamond Coat Advantages

Experience Unmatched Durability in High-Traffic Areas:

- ✓ Diamond Coat™ ensures lasting performance, providing years of reliable service even in demanding environments.
- ✓ It is designed to withstand the rigors of high-traffic areas, offering unmatched durability and resilience.

Unwavering Protection for All Substrates:

- ✓ Shield your surfaces from scratches and abrasions with the trusted defense of Diamond Coat™.
- ✓ It provides comprehensive protection across various substrate types, ensuring long-lasting surface integrity.

Tailored Solutions for Every Application:

- ✓ Diamond Coat™ offers three reactivity options, allowing for seamless adaptation to diverse application conditions.
- ✓ It can be customized to meet specific project requirements, ensuring a perfect fit for every application.

Efficiency and Ease in Application:

- ✓ Diamond Coat™ is designed with user-friendliness in mind, making it easy to apply and fast to cure.
- ✓ Its streamlined application process enables efficient workflow without compromising on quality.

Experience the Strength of DIAMOND COAT:

- ✓ With Diamond Coat™, durability meets practicality, ensuring paramount protection for your surfaces.
- ✓ It exceeds expectations in terms of performance, providing unmatched strength and reliability.
- ✓



COMMON APPLICATIONS

Suitable for protecting and sealing various types of decorative and wooden flooring, providing defense against heavy foot traffic, UV light, and moisture damage.

SUBSTRATES & PREPARATION

When applying Diamond Coat™ to newly installed decorative resin substrate supplied by Infinity Effects Group, no additional preparation is required. For old resin substrates in good condition, thorough cleaning and abrasion are necessary before applying Diamond Coat™. Timber surfaces should be sanded smooth and primed with IIC POLY RAPID PRIMER. After the primer coat has cured, the timber should be abraded again before applying the topcoat.

APPLICATION CONDITIONS

Diamond Coat™ should be applied to dry surfaces free from condensation. It can be applied in all temperature conditions down to 0°C.

MIXING

Combine the entire can of hardener with the Diamond Coat™ resin and mix thoroughly for 3-5 minutes. An electric mixer is recommended for proper component incorporation. Ensure all materials on the sides and bottom of the container are well mixed. As the resin and hardener react, heat will be generated, accelerating the reaction. The pot life is shorter with larger amounts of resin due to increased heat generation. If a smaller quantity is needed or the material cannot be used within the pot life, weigh out the resin and hardener in the proportions specified on the label using digital scales. Visit our website for detailed mixing instructions.

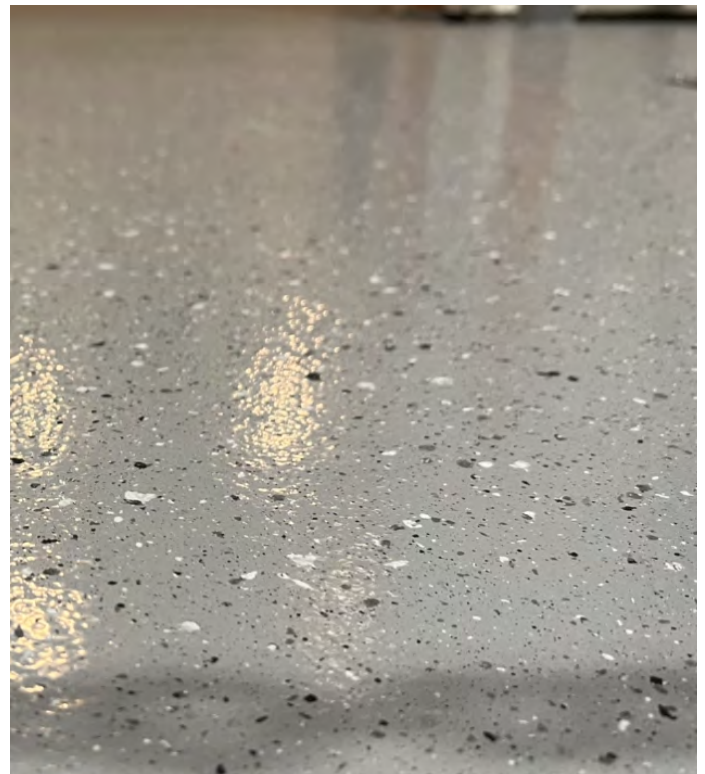
APPLICATION

For larger areas, we recommend using a squeegee to spread the mixed Diamond Coat™ evenly. Then, apply an even coat using a short or medium pile roller to achieve full coverage. Apply Diamond Coat™ generously to form a thick and continuous film on the surface.

OVER-COATING

Diamond Coat™ can be overcoated as soon as it is dry enough to walk on but should be overcoated within the time indicated on the provided table. If DIAMOND COAT is allowed to cure beyond the maximum over-coating time, glossy areas must be abraded before applying an additional coat.

Order your Diamond Coat™ directly from Infinity Effects or through our global distribution agents. Please note that all Infinity Effects products are sold according to our Standard Conditions of Sale. While we aim to provide helpful advice, we can only guarantee results for uses explicitly confirmed in writing by Infinity Effects and the specified representative.



DIAMOND COAT | Specification

Type	Polyaspartic resin
Mix Ratio	See label on the tin
Hardener	X1
Resin density	1.03
Solids content including hardener	95.5%
Colour	Clear
Solvent	Ask Representative
Coverage	6 - 8 m2 per litre

DIAMOND COAT Fast cure Pot life and cure times. Minutes

Temperature °C	0 - 15	15 - 25	25+
Pot life	10 - 15	8 - 12	5 - 10
Touch dry	25 - 35	15 - 20	10 - 20
Light traffic set time	50 - 70	35 - 55	20 - 40

DIAMOND COAT Standard cure Pot life and cure times. Minutes

Temperature °C	0 - 15	15 - 25	25+
Pot life	25 - 35	15 - 25	10 - 20
Touch dry	35 - 45	20 - 35	15 - 20
Light traffic set time	70 - 90	45 - 60	20 - 30

DIAMOND COAT Slow cure Pot life and cure times. Minutes

Temperature °C	0 - 15	15 - 25	25+
Pot life	40 - 45	25 - 35	15 - 25
Touch dry	70 - 80	45 - 55	20 - 30
Light traffic set time	110 - 130	70 - 90	35 - 45

DISCLAIMER: Customers are advised to thoroughly read and adhere to the instructions provided to ensure the optimum finish and performance of our products. The information presented is based on results gained from experience and tests and is believed to be accurate. However, we do not accept liability for any loss or damage attributable to reliance on this information, as conditions of use may lie outside our control. Any deviation by the user from these instructions may affect the performance of the products, and therefore, such actions are not advised. In such circumstances, Infinity Effects will not be held responsible.

Users should always conduct sufficient tests to establish the suitability of any products for their intended applications. While we strive to ensure consistency of color in production, slight variations in shade may occur from batch to batch.

Note: If you are unsure about the compatibility of Infinity Effects Coating with the substrate surface, we strongly recommend conducting a small test in a discreet area before applying it to the entire floor. This precaution will help ensure a successful and satisfactory outcome.

